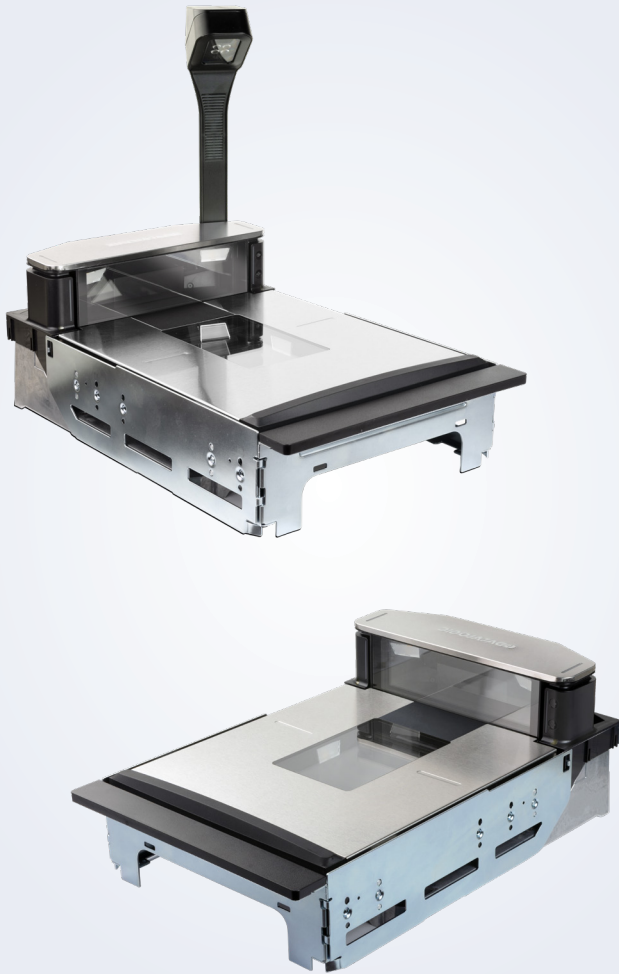


MAGELLAN™ 9900i



Scanning Excellence with an AI Edge



THE NEXT GENERATION IS HERE

The #1 selling 'in counter' scanners for assisted and self-checkout are now even better. Fresh styling, rugged design, industry-leading scan performance and new options that enable Artificial Intelligence (AI) at the checkout put the Magellan 9900i portfolio in a class of their own.

In 2013, Datalogic established a unique scanner style with our 6.8 cm / 2.7 in tower (bonnet), and the 9900i continues to support that popular form factor. The lower height allows customers to better meet ADA compliance and improve the customer experience. Three chassis lengths, multiple checkstand mount options and the addition of a Top Down Reader (TDR) allows customers to tailor a solution that best solves their assisted and self-checkout needs.

With basic and advanced configurations, the 9900i scanners and scanner/scales are the perfect companion for Point of Sale (POS) systems in all high throughput checkout environments.

ENHANCING THE CASHIER OR CUSTOMER EXPERIENCE

Packed with the latest imaging technology, the 9900i scanners feature the largest scan volume in their class. This ensures fastest read rates and ease of use regardless of 1D, 2D, GS1 or Digimarc symbologies.

The new Magellan scanners feature capacitive touch buttons and smooth surfaces to ensure the above counter areas are easy to clean and sanitize.

The 9900i TDR option expands the scan volume by 20% and adds an industry unique 6-sided view of items crossing the platter for the ultimate scanning experience. The TDR comes in 3 heights and offers an optional integrated customer-facing reader, enabling customers to scan mobile devices and coupons independent from a cashier in assisted lanes improving efficiency.

FEATURES FOR TODAY AND THE FUTURE

Magellan 9900i is powered by QuadVision™, a multi-core processor and multi-camera system with embedded Linux operating system to future-proof the platform. ScanSentry™ color camera options and neural processors result in a checkout that is fully enabled to support Artificial Intelligence (AI) solutions that will boost customer satisfaction and dramatically improve loss prevention.

FEATURES

- 6.8 cm / 2.7" tower height allows layout flexibility at the checkstand or SCO.
- Magellan 9900i features QuadVision™, a powerful IMX8 multi-core processor utilizing 4 cameras (2 horizontal and 2 vertical) that brings world class performance to the scanner. The 9900i delivers multiple high resolution images for each scan. Combine the powerful processors, 5-sided image capture and Datalogic's legendary software and you have previously unheard of performance to decode the most difficult and/or damaged barcodes. In addition, future optional integrated color cameras and color TDRs can be used for machine learning image capture and simultaneous video streaming via USB 3.0 or Ethernet for loss prevention.
- Optional built-in neural processors and accelerators enable trillions of operations per second inside the scanner eliminating a need for extra servers or cloud processing at the checkout.
- Be ready for the future GS1 Digital Link symbology which links valuable manufacturing and health safety details to each transaction.

INTEGRATED LOSS PREVENTION

ScaleSentry Technology

- Monitors the sides of the scale platter with an infrared (invisible) beam to detect if fruit or produce is misplaced on the scale platter causing the item to be underweighed.

All-Weights™ Scale Platter

- The All-Weights scale platter design provides a total scanner weighing surface including the top of the bonnet, allowing the user to properly weigh produce that is too long to fit on the platter surface.

ScanSentry

- The 9900i can detect item movement across the platter and alert the POS system if no barcode was detected. This can be augmented with color cameras and Artificial Intelligence to create 'best in class' loss prevention and item recognition solutions.



MAGELLAN 9900i (Scanner only: 9910, 9911, 9912; Scanner/Scale: 9921, 9922)

TECHNICAL SPECIFICATIONS

DECODING CAPABILITY		PHYSICAL CHARACTERISTICS	
Auto Discriminates all Retail Barcodes	EAN/JAN/UPC, Code 128, EAN/JAN Composites; GS1 DataBar Composites; GS1 DataBar Expanded Stacked; GS1 DataBar Stacked; GS1 DataBar Stacked Omnidirectional; MicroPDF417; PDF417; UPC A/E Composites. Aztec Code; Data Matrix; QR Code, Micro QR, Digimarc® Barcode and all future GS1 codes.	Dimensions	Depth (below counter): 10.6 cm / 4.0 in Length: Short - 35.2 cm / 13.9 in Length: Medium - 39.9 cm / 15.7 in Length: Long - 43.7 cm / 17.2 in Width: 29.2 cm / 11.5 in 9900i height (above counter): 6.8 cm / 2.7 in
Illumination	Multiple diffused LEDs: orientation and wavelength optimized for eye comfort.	ELECTRICAL	
Scan Indicators	Visual: Good-read confirmation for all reading planes Audio: 85 dB Speaker - Adjustable Tone and Volume plus Supports WAV file formats.	Power Requirements	Scanner Power Consumption: 12 VDC Operating (Nominal): 9.3 Watts; Sleep: 7.3 Watts; Optional DC brick: AC Input: 100 - 240 VAC, 50-60 Hz Optional Ethernet 48 VDC brick: AC Input: 100 - 240 VAC, 50-60 Hz
COMMUNICATIONS INTERFACES		ENVIRONMENTAL	
Host Multi-Interface	RS-232 / USB Multi-Interface: OEM (IBM) USB Plus Power (Scanner / Scale); RS-232 (Scanner) / RS-232 (Scale); RS-232 (Scanner) or Single Cable RS-232 (Scanner / Scale)	Ambient Light	0-86,080 lux
POS Operating Systems	Windows 10, Linux, Android™; OPOS and JavaPOS utilities are available for download	ESD Protection	25 kV air discharge
Auxiliary Ports	Powered USB Host (Type A) (x2); Powered RS-232; Remote Scale Display; EAS Controller Ports; Sensormatic, Interlock	Humidity (Non-Condensing)	5 - 95%
Ethernet Ports	1 x Ethernet is standard; Optional 7 port Ethernet switch (IEEE1588) NOTE: Switch requires an external 48V power supply	Temperature	Operating: 10 to 40 °C / 50 to 104 °F Storage/Transport: -40 to 70 °C / -40 to 158 °F
OPTIONAL SCALE FEATURES		SAFETY & REGULATORY	
Magellan Dual Interval Scale Technology	Minimum Increment: Range 1: 0.002 kg / 0.005 lb; Range 2: 0.005 kg / 0.010 lb Scale Capacity: Range 1: 0 - 6.0 kg / 0 - 15.0 lb; Range 2: 6.0 - 15.0 kg / 15.0 - 30.0 lb	Agency Approvals	The product meets necessary safety and regulatory approvals for its intended use. See the Quick Reference Guide for a complete list of certifications.
Magellan Single Interval Scale Technology	Minimum Increment: 0.005 kg / 0.010 lb; Scale Capacity: 0 - 15.0 kg / 0 - 30.0 lb	Environmental Compliance	Complies to China RoHS; Complies to EU RoHS; Complies to R.E.A.C.H. - EC1907/2006
Adaptive Scale	Compatibility – Adaptive Scales: Bizerba; Mettler Toledo; Max. Static Weight: 68.0 kg / 150.0 lb Vibration immunity: 4 filter settings	UTILITIES	
LOSS PREVENTION		Aladdin™ Configurator	Datalogic Aladdin provides customers the opportunity to manage the configuration of handheld or fixed position products, and allows firmware updates, advanced formatting through an intuitive user interface.
All-Weighs Scale Platter	Integrated horizontal and vertical scale platter surfaces increase active weighing area for easy, accurate weighing of large items.	Magellan SDK(s)	Datalogic will provide developer tools to support POS integration and the optional AI enablement HW functionality (Color cameras, Neural Processors, and Ethernet expansion).
ScaleSentry	ScaleSentry is an infrared platter detection system to provide shrink prevention; Configurable audio / visual indicators identify items placed outside weighing surface.	Remote Management Capabilities	Current Diagnostic reporting utilizes WMI (OPOS and JavaPOS) and MBeans (JavaPOS); Host Download Supports IBM Director, Wavelink Avalanche™ and other ERP management solutions.
EAS Features	Integrated EAS Antenna for Checkpoint and Nedap. Sensormatic Deactivation Controller integrated with Datalogic SmartSentry™ technology; Scanner provides Good-read / EAS Status Indicators	FUTURE AI ENABLEMENT FEATURES (OPTIONAL)	
ScanSentry	Magellan 9900i can host a variety of Artificial Intelligence solutions that improve customer experience and reduce losses at the checkout.	Image Capture	Magellan 9900i offers two color cameras (TDR and HCCM) for AI inference models image collection.
		Tensor Processor	Magellan 9900i offers a Coral TPU for processing AI inference models inside the scanner.
		Ethernet Switch	A 7 port Ethernet switch allows the Magellan to connect up to 2 integrated and 4 external cameras for creating a 'zone of cognition'.
WARRANTY		Warranty	1-Year Standard Factory Warranty

ACCESSORIES

